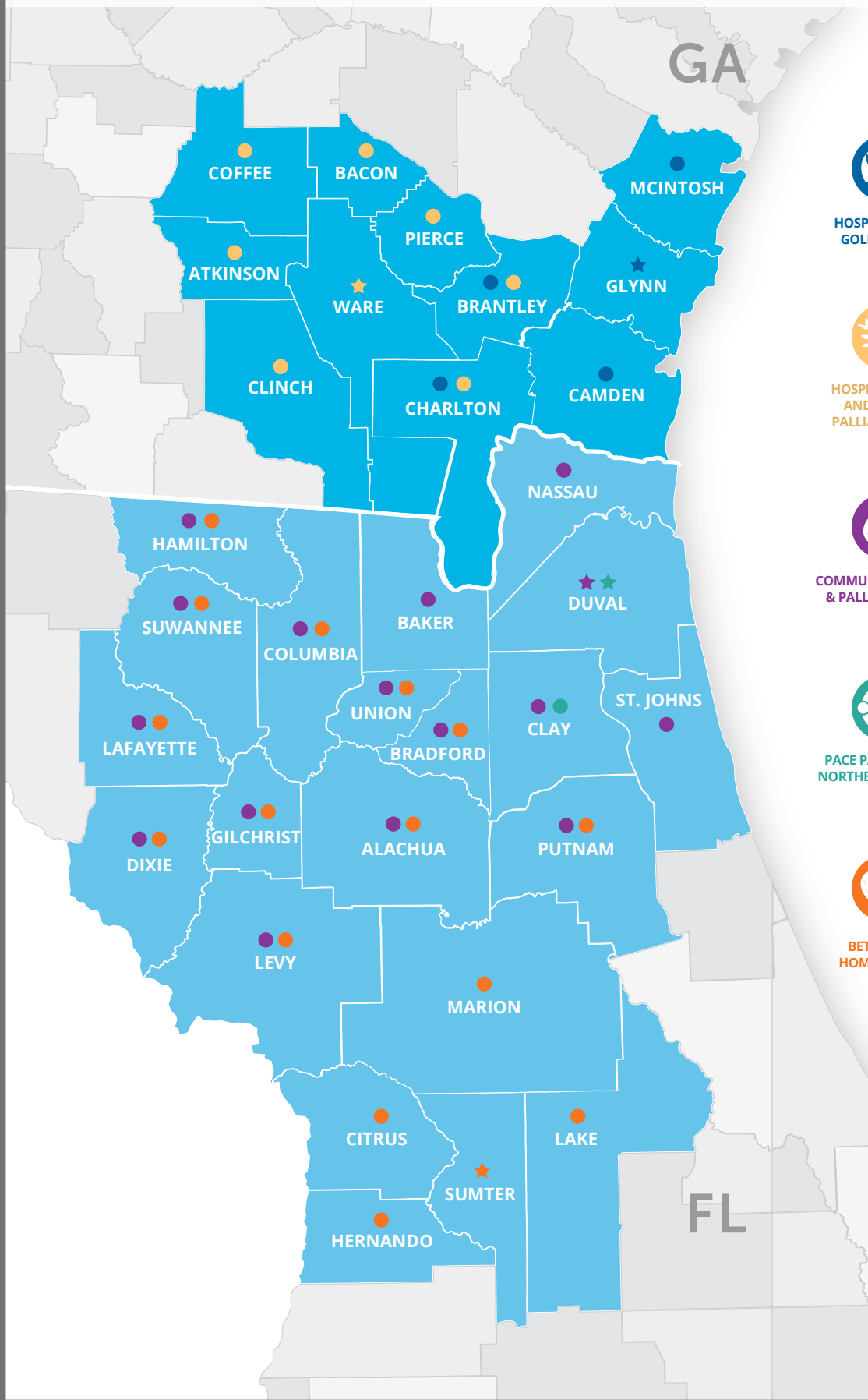




alivia care inc.

To care all ways. To care always.

# Provider Service Area Map



HOSPICE OF THE GOLDEN ISLES

Glynn\*, Camden, McIntosh, Brantley, and Charlton



HOSPICE SATILLA AND SATILLA PALLIATIVE CARE

Ware\*, Pierce, Atkinson, Bacon, Brantley, Charlton, Clinch, and Coffee



COMMUNITY HOSPICE & PALLIATIVE CARE

**Northeast (4A):** Baker, Clay, Duval\*, Nassau, St. Johns  
**North Central (3A):** Alachua, Bradford, Columbia, Dixie, Gilchrist, Hamilton, Lafayette, Levy, Putnam, Suwannee, and Union



PACE PARTNERS OF NORTHEAST FLORIDA

Clay and Duval\*



BETTER LIFE HOME HEALTH

Alachua, Bradford, Citrus, Columbia, Dixie, Gilchrist, Hamilton, Hernando, Lafayette, Lake, Levy, Marion, Putnam, Sumter\*, Suwannee, and Union

★ Headquarters